

# Lexington-Concord Theme at WALPEX, October 25-26

WALPEX, the Waltham Stamp Club's annual philatelic show and exhibition, will be held October 25-26 at a location that is familiar to collectors, the Boxboro Regency Hotel & Conference Center, 242 Adams Place, Boxborough, MA 01719, off I-495 exit 75.

The site offers all the amenities show visitors have come to expect and enjoy, is fully handicapped accessible, and parking and admission also are free. There also are special show rates, with a link to the hotel on the Walpex web site, [www.walpex.org](http://www.walpex.org).

The bourse portion of the show will feature more than 50 tables of stamps, covers, and supplies offered by dealers from throughout New England, the New York metropolitan area and the Mid-Atlantic states. A listing of the dealers is provided on the show website. In addition, the USPS will have a philatelic counter at the show with current stamp releases.

The theme of this year's show is the 250th anniversary of the Battle of Lexington and Concord, a theme that will be featured on a show cover with a pictorial cancellation. The covers will be available at the show. For mail order information, go to the show website.

Both novice and advanced exhibitors participate in the non-competitive exhibit portion of the show. WALPEX has always encouraged collectors who have never exhibited before to participate, so entries offer a refreshing mix alongside advanced exhibits.

Traditional WALPEX activities continuing this year include hourly door prizes. Another mainstay is the popular "Phabulous Phishbowl", in which collectors can buy envelopes of stamps for 24¢ each or 5/\$1, some of which contain larger philatelic prizes. Younger visitors especially enjoy the Phishbowl, although the area is a favorite of collectors of all ages.

A youth area staffed by volunteers from the Northeast Federation of Stamp Clubs will offer young people an opportunity to learn the fundamentals of stamp collecting. Free philatelic material will be provided to help get them started.

Show hours are 10 to 6 on Saturday and 9 to 3 on Sunday. For more information and updates, go to [www.walpex.org](http://www.walpex.org).

## WALPEX 2025!

Saturday Oct. 25, 10-6; Sunday Oct. 26, 9-3

Boxboro Regency

Hotel & Conference Center  
(Special Show Hotel Rates)

242 Adams Place, Boxborough, Mass



55+ dealer tables with Stamps, Covers & Supplies  
20+ Non-Competitive Exhibits • Hourly Door Prizes  
Youth Activities • USPS Kiosk • Show Cover & Cancel

APS & Boston 2026 International Tables

Show Theme 250th Anniversary of the  
Battle of Lexington and Concord

And, Once Again, "The Phabulous Phishbowl"!

\$5 admission covers both days; up to 18 Free

Plenty of FREE parking

Jointly sponsored by

The Northeastern Federation of Stamp Clubs

Additional info at [www.walpex.org](http://www.walpex.org)



MOUNTAINSIDE  
Stamps | Coins | Currency

## Look For Mountainside At Our WALPEX Booths 41-42

We specialize in stamps from the United States, Canada, British Commonwealth, Europe and Asia.

At Mountainside you will discover a large inventory of mint and used sets, singles, booklets and other U.S. and Worldwide intermediate to high value material that you will be pleased to add to your collection.

At Mountainside we also are buyers of quality stamps, covers, coins and currency.

Owner and Professional Philatelist and Numismatist Tom Jacks has been dealing in fine stamps, coins, and currency for over 40 years. Come and meet Tom, view Mountainside's high quality inventory, or arrange for the sale of your holdings at our show booths. You can also contact us all year round at:

### Mountainside Stamps

P.O. Box 1116, Mountainside, NJ 07092 • Telephone: 908-419-9751

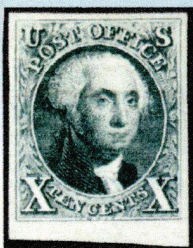
E-mail: [tjacks@verizon.net](mailto:tjacks@verizon.net) • [www.Mountainsidestampsandcoins.com](http://www.Mountainsidestampsandcoins.com)

(Can't make it to the show? Email us to join our mailing list.)

Member APS, USSS, ASDA, ANA



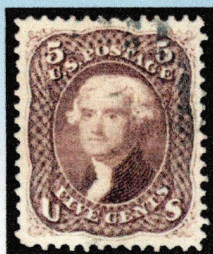
# Please Visit us at Our WALPEX Booths 5-6 Or Our Website [www.millerstamps.com](http://www.millerstamps.com)



#4 Unused NG  
with graded XF-  
Superb-95 Cert  
**\$2,595**



#46 Unused NG  
with graded XF-90  
Cert  
**\$9,500**



#105 Used with  
graded XF-Superb-  
95 Cert  
**\$19,995**



#118a Mint OG VF,  
only 17 known without  
grill with Cert  
**\$7,995**



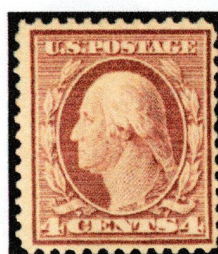
#120b INVERT,  
Used Fine, tiny faults,  
only 92 exist, with 3 Certs  
**\$19,995**



#130 Mint OG  
with Graded XF-  
Superb 95 Cert  
**\$7,995**



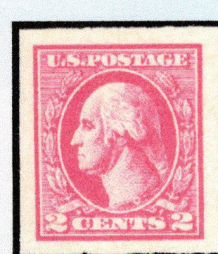
#131 Mint OG  
with Graded XF-  
Superb 95 Cert  
**\$8,250**



#360 Mint OG Fine,  
only 93 known,  
with 2 Certs  
**\$24,950**



#404 Mint LH with  
Graded XF-Superb-  
95 Cert  
**\$1,200**



#534B Mint LH  
with Graded XF-  
Superb-95 Cert  
**\$3,150**



#C13-15 Mint NH each with  
Graded XF-Superb-95 Certs  
**\$3,395**



**DARN!**  
I should  
have  
bought my  
stamps from



**BUY & SELL U.S. Classics to the Back-of-Book**  
Singles, Booklets, Plate Blocks, Sheets, Ducks, Confederates, Canada, Zeppelin Stamps & Covers

## MILLER'S STAMP CO.

— A name you can trust since 1969 —

21 Fairhaven Road • Niantic, CT 06357-7011  
Phone: 860-908-6200 • E-mail: [stamps@millerstamps.com](mailto:stamps@millerstamps.com)  
or visit our website: [www.millerstamps.com](http://www.millerstamps.com)

